



# FESTIVAL AS OPEN SHOW

TO BE HELD ON SATURDAY 01 OCTOBER 2016  
AT THE FESTIVAL OF FISHKEEPING

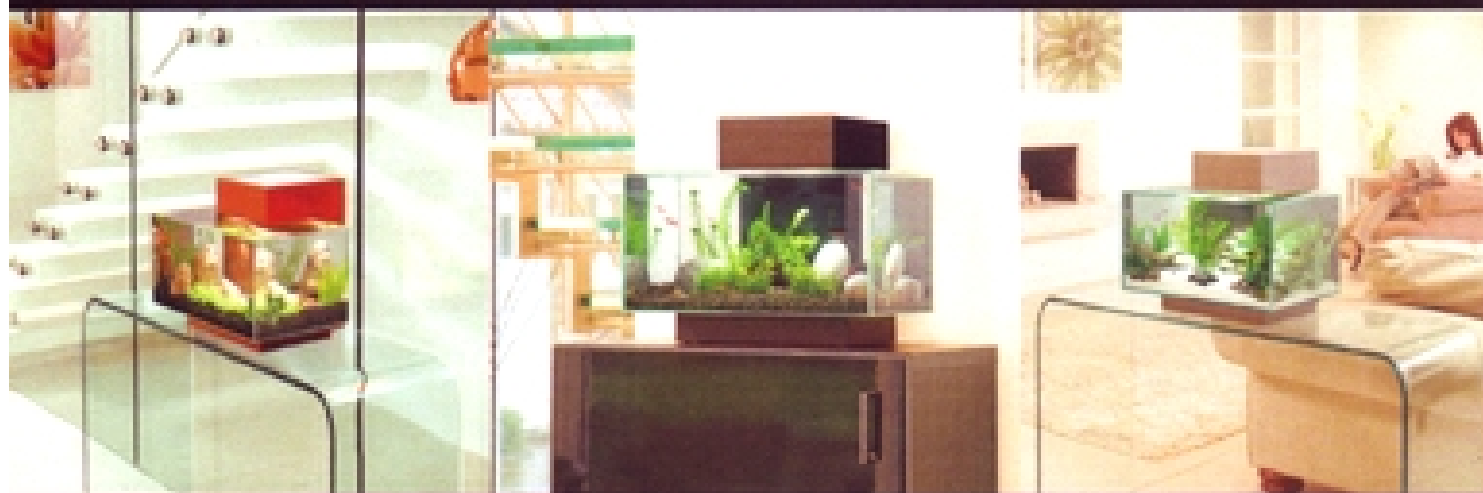
## LIST OF CLASSES

|      |   |
|------|---|
| Ag   | MINI FURNISHED AQUARIUM   |
| Ak   | FURNISHED AQUASCAPE   |
| B    | BARBS   |
| Ba   | BARBS (as per FBAS size sheets)   |
| C    | CHARACINS (other than Ca & Cb) - <i>(FBAS Championship Class)</i>       |
| Ca   | CHARACINS (as current FBAS size sheet)                                  |
| Cb   | PENCILFISH  |
| D    | CICHLIDS (other than Da, Db & Dc)                                       |
| Da   | ANGELFISH   |
| Db   | DWARF CICHLIDS (as current FBAS size sheet)                             |
| Dc   | RIFT VALLEY CICHLIDS  |
| E    | LABYRINTH FISH (Other than Betta splendens)                             |
| Ea   | BETTA SPLENDENS   |
| F    | KILLIEFISH  |
| G    | CATFISH - - - - - <i>(FBAS Diamond Class)</i>                           |
| H    | CORYDORAS & SCLEROMYSTAX  |
| Ha   | ASPIDORAS & BROCHIS   |
| J    | RASBORAS  |
| K    | DANIOS  |
| L    | LOACHES   |
| La   | LOACHES (as current FBAS size sheet) - <i>(FBAS Championship Class)</i> |
| M    | AOV TROPICAL EGGLAYER   |
| Ma   | AOV TROPICAL EGGLAYER (as current FBAS size sheet)                      |
| Nb-m | SEXED PAIRS (Tropical Egglayers)  |
| No-t | SEXED PAIRS (Tropical Livebearers)                                      |
| Oa-q | MALE GUPPIES  |
| Os-z | FEMALE GUPPIES  |
| P    | CULTIVATED TROPICAL LIVEBEARERS   |
| Q    | WILD SWORDTAILS   |
| R    | WILD PLATIES  |
| S    | WILD POECILIA, LIMA, etc. - - - <i>(FBAS Championship Class)</i>        |
| T    | AOV LIVEBEARERS (Except Goodeids)                                       |
| Ta   | GOODEIDS  |
| U    | SINGLE TAILED GOLDFISH - - - <i>(FBAS Championship Class)</i>           |
| V    | TWINTAIL GOLDFISH   |
| W    | AOV COLDWATER FISH  |
| Xb-m | BREEDERS TROPICAL EGGLAYER <i>(four fish per entry)</i>                 |
| Xo-t | BREEDERS TROPICAL LIVEBEARER <i>(four fish per entry)</i>               |
| Z    | PLANTS <i>Malcolm Goss Memorial Trophy Class</i>                        |

# FLUVAL<sup>®</sup>

# EDGE

ADD DESIGN TO YOUR LIFESTYLE

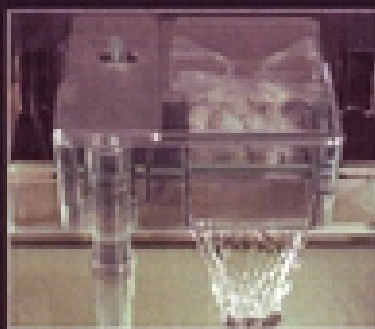


Fluval EDGE brings an exciting new look to aquatics, combining the most modern aquarium design with the beauty of nature. The result is an utterly stylish complement to any home or office space.



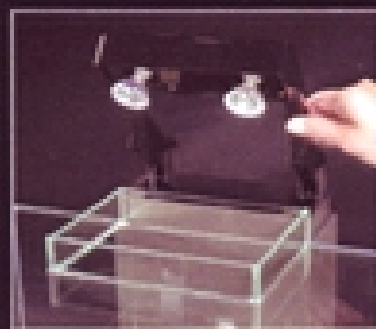
### 360° Viewing

Glass top for spectacular views from all angles and less evaporation for reduced maintenance



### Clear Healthy Water

Easy to use cascading flow filter with 3 stage filtration for a healthy, oxygenated environment



### Clean Lines

The filter and retractable lighting modules are hidden from view for a clean, modern look



For more information visit [www.hagen.com](http://www.hagen.com)



# FLUVAL<sup>®</sup>

[www.fluvalaquatics.com](http://www.fluvalaquatics.com)

# **OPEN SHOW RULES**

- 1) Entries by email, WITH EXHIBITOR'S NAME IN THE SUBJECT please, must be submitted by 6 pm on Friday 30 September, or by post, must arrive no later than Saturday 24 September. No pre-booked entries will be accepted after these times. We CANNOT accept entries by telephone or messenger.
- 2) All pre-booked entries are free. However, each exhibitor will be required to pay the £7.50 entry to the Festival at the main gate. Each paying exhibitor will be given a free pass by the show secretary for entry to the Festival on the Sunday. Late email entries and entries on the day will be accepted, space permitting, but will be charged at £1 per entry, irrespective of the number of entries IN ADDITION to the £7.50 Festival gate entry fee.
- 3) All exhibits must be benched by 10.30 am on Saturday 01 October. Judging will commence at 10.45 am.
- 4) Entries in the Championship classes will be eligible to compete in the Supreme Finals on the following day. They will NOT be eligible for the 2017 season. FBAS Diamond classes will be eligible for the 2017 season and not 2016.
- 5) De-benching will not be permitted until 5.00 pm on the show day.
- 6) Organisers will not be responsible for the loss of or damage to any exhibit for whatever cause.
- 7) The show will be run to FBAS Show Rules.
- 8) Gravel is not permitted except in classes Ag, Ak and Z.
- 9) Breeders teams to consist of four fish under 14 months on the day of the show and bred by the owner.

## **SHOW SECRETARY**

Mrs Joan Pannell

Email: joan.pannell@btinternet.com (no later than 6 pm on 30 Sept)

Address: 15 Old Top Road, Hastings, East Sussex, TN35 5DT (to arrive no later than 24 Sept)

**IMPORTANT: Please see rules (1 & 2) above for more information.**

## **AWARDS**

|                                  |   |                                 |
|----------------------------------|---|---------------------------------|
| 1ST, 2ND, 3RD & 4TH Places       | - | Rosette & Place Card            |
| Best Fish in Show                | - | Pin                             |
| Two Reserve Best in Show         | - | Certificate                     |
| Championship Classes 1, 2, 3 & 4 | - | Pin (Winner Only) & Certificate |

**COMPLIMENTARY AQUATIC GOODS WILL BE ISSUED TO EACH EXHIBITOR**



# **FESTIVAL AS OPEN SHOW**

**TO BE HELD ON SATURDAY 01 OCTOBER 2016**

## **ENTRY FORM**

SHOW ADDRESS - FESTIVAL OF FISHKEEPING, HOUNSLOW URBAN FARM, FAGGS ROAD  
SHOW SEC. - JOAN PANSELL ENTRIES TO - [joan.pannell@btinternet.com](mailto:joan.pannell@btinternet.com)

EXHIBITOR'S NAME - .....

EXHIBITOR'S ADDRESS .....

POST CODE ..... TELEPHONE NUMBER .....

| CLASS | EXHIBIT NAME | D.O.B.<br>(BREEDERS<br>CLASSES<br>ONLY) | FOR OFFICIAL<br>USE ONLY | CLASS | EXHIBIT NAME | D.O.B.<br>(BREEDERS<br>CLASSES<br>ONLY) | FOR OFFICIAL<br>USE ONLY |
|-------|--------------|---|--------------------------|-------|--------------|---|--------------------------|
|       |              |   |                          |       |              |   |                          |
|       |              |   |                          |       |              |   |                          |
|       |              |   |                          |       |              |   |                          |
|       |              |   |                          |       |              |   |                          |
|       |              |   |                          |       |              |   |                          |
|       |              |   |                          |       |              |   |                          |
|       |              |   |                          |       |              |   |                          |
|       |              |   |                          |       |              |   |                          |
|       |              |   |                          |       |              |   |                          |
|       |              |   |                          |       |              |   |                          |
|       |              |   |                          |       |              |   |                          |
|       |              |   |                          |       |              |   |                          |
|       |              |   |                          |       |              |   |                          |
|       |              |   |                          |       |              |   |                          |
|       |              |   |                          |       |              |   |                          |
|       |              |   |                          |       |              |   |                          |
|       |              |   |                          |       |              |   |                          |
|       |              |   |                          |       |              |   |                          |
|       |              |   |                          |       |              |   |                          |
|       |              |   |                          |       |              |   |                          |

**PLEASE INFORM OF ANY LARGE TANK SPACE  
AND/OR POWER REQUIREMENTS**