



FESTIVAL AS OPEN SHOW

**TO BE HELD ON SATURDAY 07 OCTOBER 2017
AT THE FESTIVAL OF FISHKEEPING**

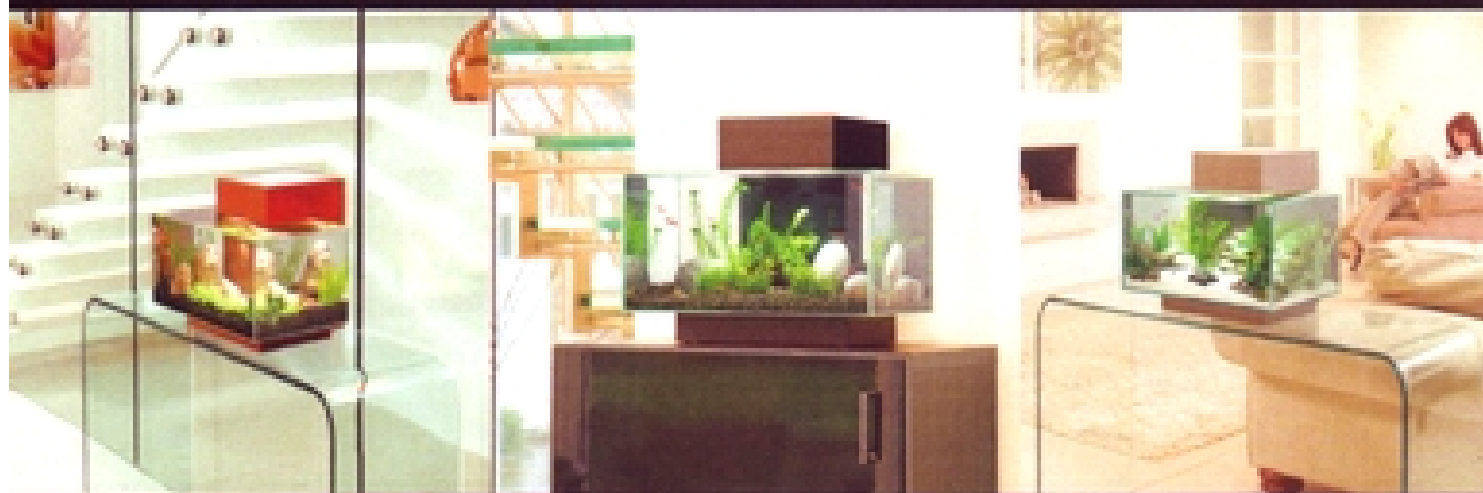
LIST OF CLASSES

Ag	MINI FURNISHED AQUARIUM
Ak	FURNISHED AQUASCAPE
B	BARBS
Ba	BARBS (as per FBAS size sheets)
C	CHARACINS (other than Ca & Cb)
Ca	CHARACINS (as current FBAS size sheet)
Cb	PENCILFISH - - - - - (FBAS Championship Class)
D	CICHLIDS (other than Da, Db & Dc)
Da	ANGELFISH
Db	DWARF CICHLIDS (as current FBAS size sheet)
Dc	RIFT VALLEY CICHLIDS
E	LABYRINTH FISH (Other than Betta splendens)
F	KILLIEFISH
G	CATFISH
H	CORYDORAS & SCLEROMYSTAX
Ha	ASPIDORAS & BROCHIS
I	BETTA SPLENDENS
J	RASBORAS - - - - - (FBAS Diamond Class)
K	DANIOS
L	LOACHES
La	LOACHES (as current FBAS size sheet)
M	AOV TROPICAL EGGLAYER - - - (FBAS Championship Class)
Ma	AOV TROPICAL EGGLAYER (as current FBAS size sheet)
Nb-m	SEXED PAIRS (Tropical Egglayers)
No-t	SEXED PAIRS (Tropical Livebearers)
Oa-q	MALE GUPPIES
Os-z	FEMALE GUPPIES
P	CULTIVATED TROPICAL LIVEBEARERS
Q	WILD SWORDTAILS
R	WILD PLATIES
S	WILD POECILIA, LIMA, etc.
T	AOV LIVEBEARERS (Except Goodeids)
Ta	GOODEIDS
U	SINGLE TAILED GOLDFISH
V	TWINTAIL GOLDFISH - - - - (FBAS Championship Class)
W	AOV COLDWATER FISH
Xb-m	BREEDERS TROPICAL EGGLAYER (four fish per entry)
Xo-t	BREEDERS TROPICAL LIVEBEARER (four fish per entry)
Z	PLANTS

FLUVAL[®]

EDGE

ADD DESIGN TO YOUR LIFESTYLE

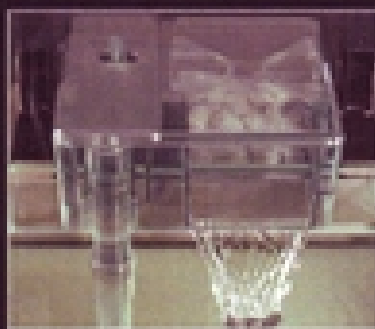


Fluval EDGE brings an exciting new look to aquatics, combining the most modern aquarium design with the beauty of nature. The result is an utterly stylish complement to any home or office space.



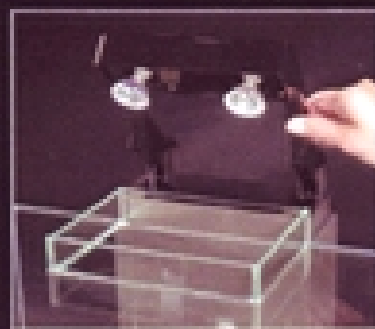
360° Viewing

Glass top for spectacular views from all angles and less evaporation for reduced maintenance



Clear Healthy Water

Easy to use cascading flow filter with 3 stage filtration for a healthy, oxygenated environment



Clean Lines

The filter and retractable lighting modules are hidden from view for a clean, modern look



For more information visit www.hagen.com



FLUVAL[®]

www.fluvalaquatics.com

OPEN SHOW RULES

- 1) Entries by email, WITH EXHIBITOR'S NAME IN THE SUBJECT please, or by phone must be submitted by 6 pm on Friday 06 October, or by post, must arrive no later than Saturday 30 September. No pre-booked entries will be accepted after these times. We CANNOT accept entries by messenger.
- 2) All pre-booked entries are free. However, each exhibitor will be required to pay the £8.50 entry to the Festival at the main gate. Each paying exhibitor will be given a free pass by the show secretary for entry to the Festival on the Sunday. Late email entries and entries on the day will be accepted, space permitting, but will be charged at £1 per entry, irrespective of the number of entries IN ADDITION to the £8.50 Farm & Festival gate entry fee.
- 3) All exhibits must be benched by 10.30 am on Saturday 07 October. Judging will commence at 10.45 am.
- 4) Entries in the Championship classes will be eligible to compete in the Supreme Finals on the following day. They will NOT be eligible for the 2018 season. FBAS Diamond classes will be eligible for the 2018 season and not 2017.
- 5) De-benching will not be permitted until 5.00 pm on the show day.
- 6) Organisers will not be responsible for the loss of or damage to any exhibit for whatever cause.
- 7) The show will be run to FBAS Show Rules.
- 8) Gravel is not permitted except in classes Ag, Ak and Z.
- 9) Breeders teams to consist of four fish under 14 months on the day of the show and bred by the owner.

SHOW SECRETARY

Mrs Joan Pannell

Email: joan.pannell@btinternet.com or 07774 880005 (by 6 pm on 06 Oct)

Address: 15 Old Top Road, Hastings, East Sussex, TN35 5DT (to arrive no later than 30 Sept)

IMPORTANT: Please see rules (1 & 2) above for more information.

AWARDS

1ST, 2ND, 3RD & 4TH Places	-	Rosette & Place Card
Best Fish in Show	-	Pin
Two Reserve Best in Show	-	Certificate
Championship Classes 1, 2, 3 & 4	-	Pin (Winner Only) & Certificate

COMPLIMENTARY AQUATIC GOODS WILL BE ISSUED TO EACH EXHIBITOR

